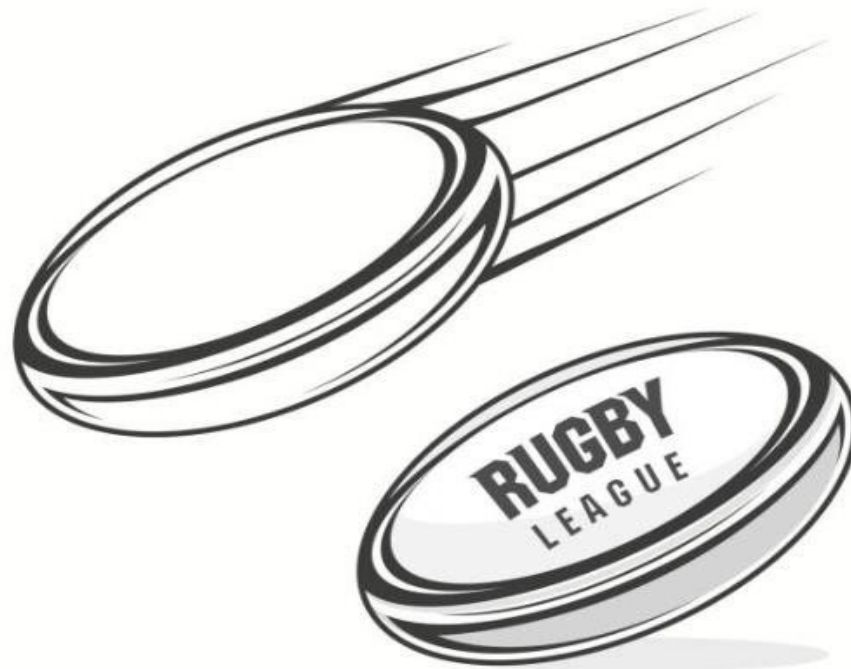


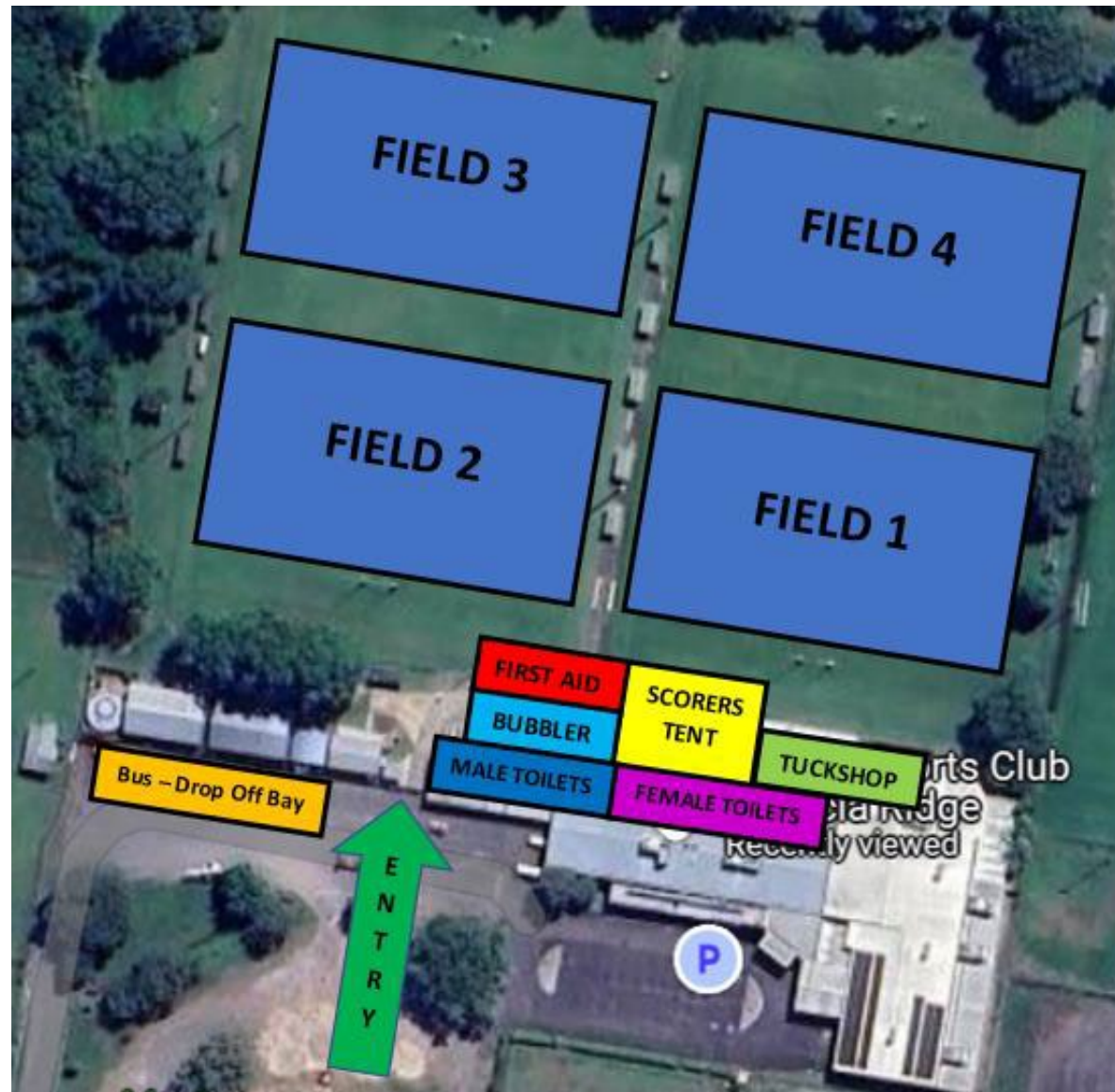
**INALA DISTRICT CLUSTER**

**RUGBY LEAGUE GALA DAY 2025**

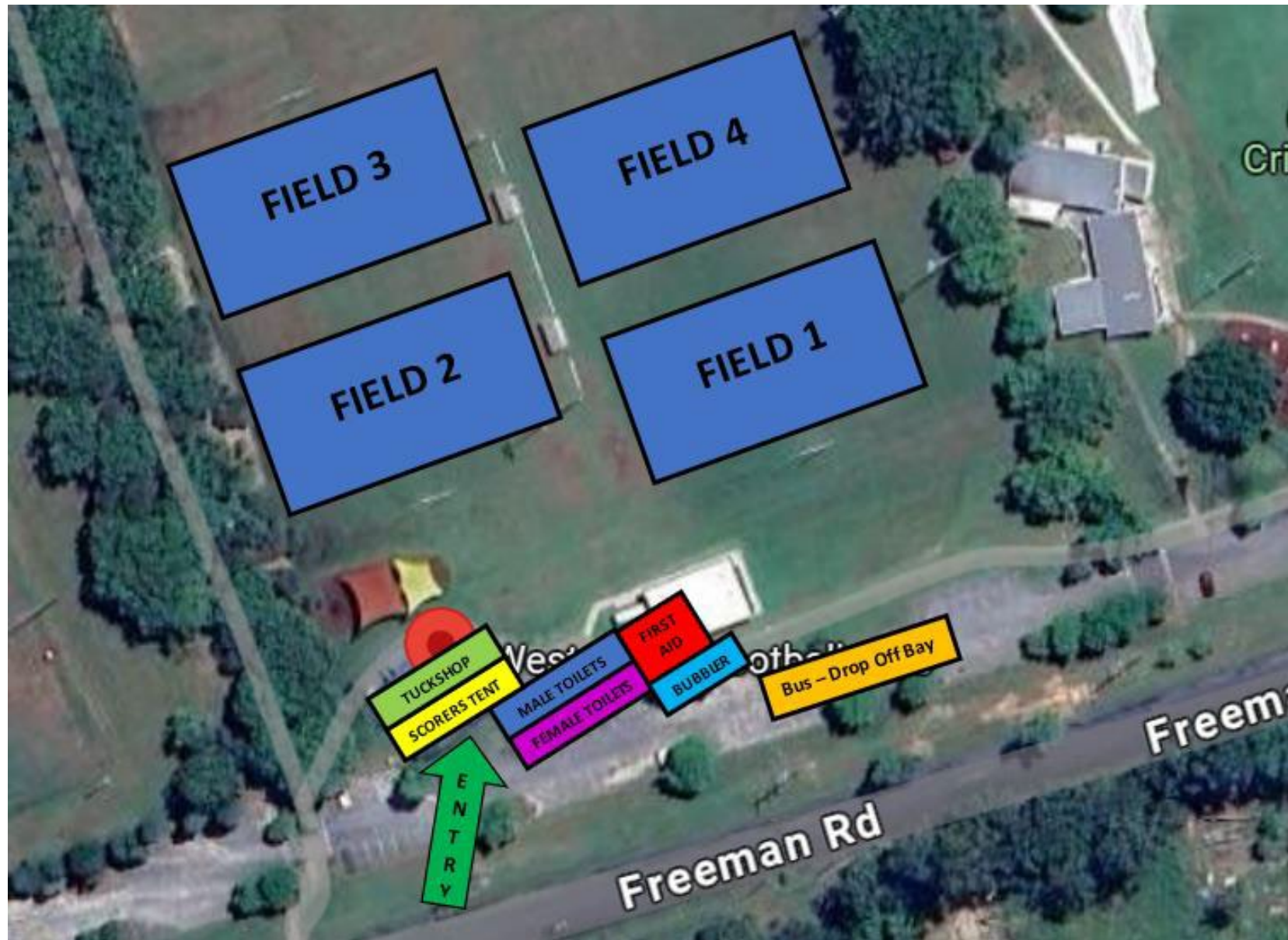
**FRIDAY 23<sup>rd</sup> MAY & 30<sup>TH</sup> MAY**



## MAP – Souths Acacia Ridge Rugby League Club



## MAP – West Inala Football Club



## KEY INFORMATION

### Locations

Souths Junior Magpies Rugby League Club - 174 Mortimer Rd, Heathwood QLD 4110

West Inala Football Club - CJ Greenfield, Freeman Road, Inala, Brisbane, Queensland, Australia 4077

### Shelter

Shelter is available. Please see map.

### Transport/Parking

Buses can drop off teams in the drop off area of the club grounds. Buses are able to park near playground area. Parents/ spectators can park in the club carpark or near playground area.

### Expectations

Students are to stay in their areas if they are not playing. Rubbish in the area needs to be placed in bins and cleaned before leaving grounds. **Parents** are most welcomed to watch but the referees are not to be interfered with throughout the course of the game.

### Supervision

Please ensure students remain in your home base area and are supervised by a responsible adult.

### Facilities

Students, staff and parents are able to use the toilets located near the school/ clubroom area.

Drinking taps can be found near the toilet areas. Remind students to respect the facilities provided for us.

### First Aid

There will be a First Aid Tent and officer provided – please see map.

### Tuck-shop

Souths Junior Magpies tuck-shop will be open throughout the day  
West Inala Football tuck-shop; TBC (To be confirmed)

## GAME INFORMATION

<b>Games/ Draw</b>	Games begin at 9.30am and finish at 2pm. Games will start and end by timekeeper. A 1-minute countdown will begin to signal the start of each game and end of period break. Due to numbers of teams and field availability, Juniors will play 7-8 games. Seniors will play 8 games. Games will be 30 minutes in duration. 12 ½ minutes each half.
<b>Points</b>	<b>3</b> points = WIN / <b>BYE</b> GAME; <b>2</b> points = DRAW; <b>1</b> point = LOSS
<b>Scoring System</b>	After each game, please fill out the scoresheet in the tent area where the convenor will be. Game scores will be tallied and recorded over the two gala days which will result in teams facing off for placing on the leader board. In the event of a tie, we will use the 'For and Against' points system.
<b>Equipment</b>	Teams must bring their <b>own</b> game ball Players <b>must</b> wear mouth guards Kicking Tee
<b>Footwear</b>	Football boots or runners must be worn
<b>Sportsmanship</b>	Strongly encourage <b>before</b> , <b>during</b> and <b>after</b> the game



## RULES

The NRL Safeplay Code will be enforced for all competition matches.

1. Each match will be of **30 minutes** duration and will be comprised of **two 12 ½ minute halves**. There will be a half time period of **5 minutes to allow for change** of DH & FR, rehydration and team talk.
2. No more than nine (9) players on the field at any one time. Unlimited interchange may take place during course of match
3. There can only be one marker and the rest of the defensive team must retreat 5m from the point of the play the ball. The defensive team (including marker) may only advance once the attacking team's first receiver catches the ball or the dummy half runs, kicks or mishandles the ball.
4. The **attacking team** must have a minimum of **two passes** before being tackled or a changeover will occur. The **DH** and **FR** are allowed to run **without** the two-pass rule.
5. There will be **no** scrums. All situations where a scrum would normally occur will be replaced by a change of possession (play the ball) on the site of the infringement once the referee is ready.
6. Teams **cannot** perform "bomb" kicks or attempts at "drop kicks/goals" during play. If either of these kicks are attempted there will be a change of possession at the spot at which the kick was taken
7. Teams that have been awarded the penalty can only take the tap option.
8. There will be no conversions after a try has been scored. The restart of play will be by a tap to the non-scoring team.
9. Foul play - Periods of temporary suspension (sin bin) will be for 5 minutes duration. Any period of temporary suspension expires at the end of the game.

**When there is no organised referee available, please share half a game each.**

**Please record scores at official's tent on the scoresheet after each game. NO scores received = 0-0 draw**

Inala District Inter-school Rugby League Competition 2025 – Week 1								
Junior Rugby League Competition Participants				Senior Rugby League Competition Participants				
Acacia Ridge SS Durack SS Murri SS		St Joseph’s - Blue St Marks		Acacia Ridge SS Durack SS1 – Away for Wk1 Durack SS2 – Away for Wk1 Inala SS		Murri SS St Joseph’s - Gold St Marks		
Time	Field 1	SCORE	Field 2	SCORE	Field 3	SCORE	Field 4	SCORE
9:30 Junior R1 BYE GAME Acacia Ridge SS	St Marks vs Durack SS		St Joseph’s - Blue vs Murri SS		vs		vs	
10:00 Senior R1 BYE GAME Acacia Ridge SS	St Marks vs Inala SS		St Joseph’s - Gold vs Murri SS		vs		vs	
10:30 Junior R2 BYE GAME St Joseph’s - Blue	Acacia Ridge SS vs St Marks		Murri SS vs Durack SS		vs		vs	
11:00 Senior R2 BYE GAME Inala SS	St Joseph’s - Gold vs Acacia Ridge SS		Murri SS vs St Marks		vs		vs	
11:30 Junior R3 BYE GAME St Marks	Acacia Ridge SS vs Murri SS		Durack SS vs St Joseph’s - Blue		vs		vs	
12:00 Senior R3 BYE GAME St Joseph’s - Gold	Acacia Ridge SS vs St Marks		Murri SS vs Inala SS		vs		vs	
12:30 – 1:00	LUNCH BREAK							
1:00 Junior R4 BYE GAME Durack SS	St Joseph’s - Blue vs Acacia Ridge SS		Murri SS vs St Marks		vs		vs	
1:30 Senior R4 BYE GAME St Marks	Acacia Ridge SS vs Murri SS		Inala SS vs St Joseph’s - Gold		vs		vs	
2:00	FINISH & PACK UP							

Inala District Inter-school Rugby League Competition 2024 – Week 2								
Junior Rugby League Competition Participants				Senior Rugby League Competition Participants				
Acacia Ridge SS Durack SS Murri SS		St Joseph's St Marks		Acacia Ridge SS Durack SS1 Durack SS2 Inala SS			Murri SS St Joseph's St Marks	
Time	Field 1	SCORE	Field 2	SCORE	Field 3	SCORE	Field 4	SCORE
<b>9:30 Junior R5</b> <b>BYE GAME</b> St Joseph's - Blue	St Marks vs Acacia Ridge		Durack SS vs Murri SS		vs		vs	
<b>10:00 Senior R5</b> <b>BYE GAME</b> Acacia Ridge SS	Durack SS2 vs Inala SS		Durack SS1 vs Murri SS		St Marks vs St Joseph's - Gold		vs	
<b>10:30 Junior R6</b> <b>BYE GAME</b> Murri SS	Durack SS vs Acacia Ridge SS		St Marks vs St Joseph's - Blue		vs		vs	
<b>11:00 Senior R6</b> <b>BYE GAME</b> St Joseph's - Gold	Acacia Ridge SS vs Durack SS1		St Marks vs Durack SS2		Murri Ss vs Inala SS		vs	
<b>11:30 Junior R7</b> <b>BYE GAME</b> Acacia Ridge SS	Durack SS vs St Marks		Murri SS vs St Joseph's - Blue		vs		vs	
<b>12:00 Senior R7</b> <b>BYE GAME</b> Inala SS	Acacia Ridge SS vs St Marks		St Joseph's - Gold vs Durack SS1		Murri SS vs Durack SS2		vs	
<b>12:30 – 12:50</b>	<b>LUNCH BREAK/ Convenor to finalise placing rounds</b>							
<b>12:50 – 12:55</b>	<b>All Schools meet near Field 1 ASAP for final placing games</b>							
<b>12:55 Junior R8</b> Finals & Placing	<b>GRAND FINAL –</b> <b>1st</b> <b>vs</b> <b>2<sup>nd</sup></b>		<b>3<sup>rd</sup></b> <b>vs</b> <b>4<sup>th</sup></b>		<b>Junior 5<sup>th</sup></b> <b>vs</b> <b>Senior 7<sup>th</sup></b>			
<b>1:25 Senior R8</b> Finals & Placing	<b>GRAND FINAL –</b> <b>1st</b> <b>vs</b> <b>2<sup>nd</sup></b>		<b>3<sup>rd</sup></b> <b>vs</b> <b>4<sup>th</sup></b>		<b>5<sup>th</sup></b> <b>vs</b> <b>6<sup>th</sup></b>			
<b>1:55 -2:00</b>	<b>PRESENTATIONS &amp; PACK UP</b>							



Printable Score Cards

Field:	Try Tally
Schools	
_____	
vs	
_____	
Winner:	

Field:	Try Tally
Schools	
_____	
vs	
_____	
Winner:	

Field:	Try Tally
Schools	
_____	
vs	
_____	
Winner:	

Field:	Try Tally
Schools	
_____	
vs	
_____	
Winner:	

INALA DISTRICT RUGBY LEAGUE TEAM POINTS & RANKING									
---	--	--	--	--	--	--	--	--	--

[illegible][illegible]

